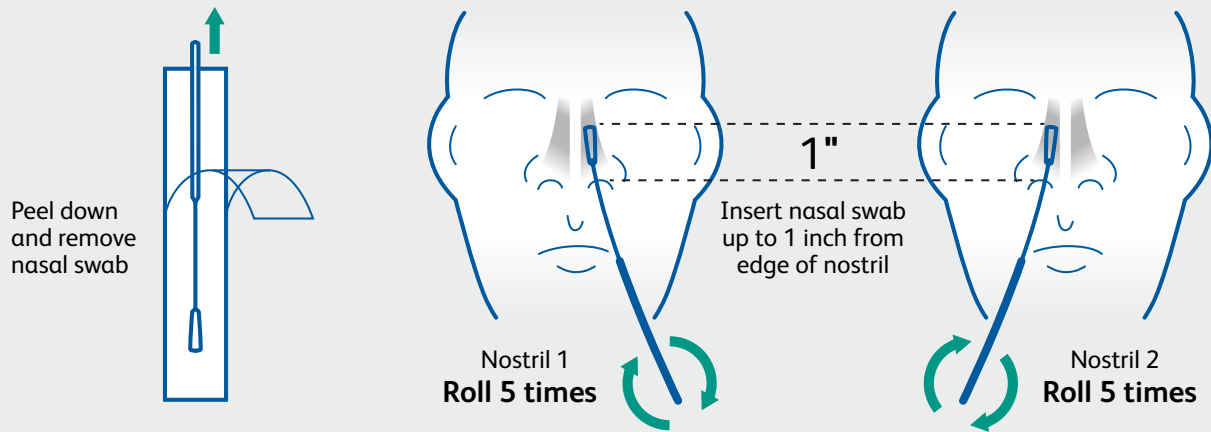


BD Veritor™ System

for Rapid Detection of SARS-CoV2

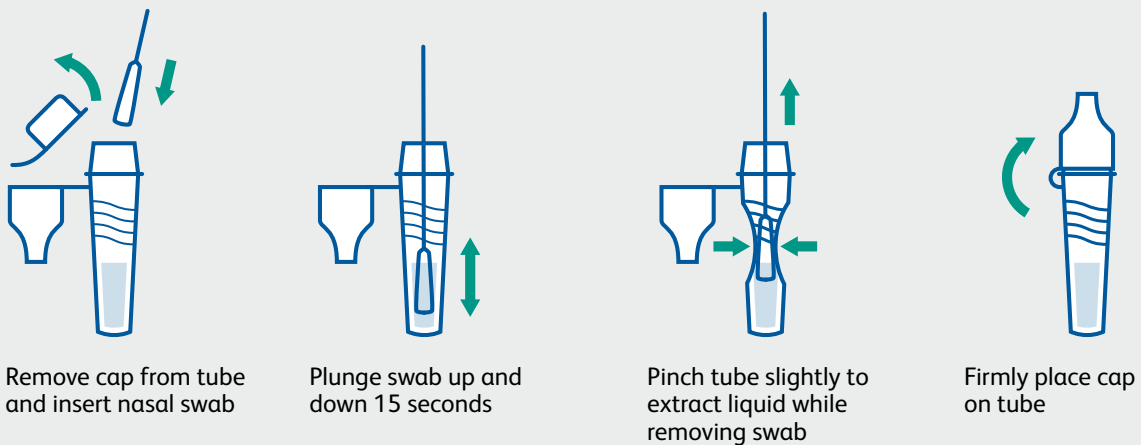
1

Sample collection



2

Sample preparation



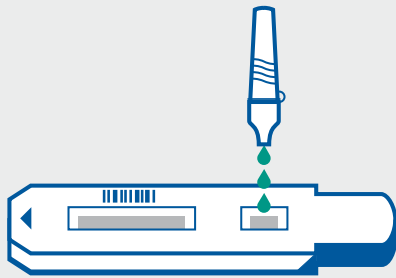
Continued on back



3

Sample testing

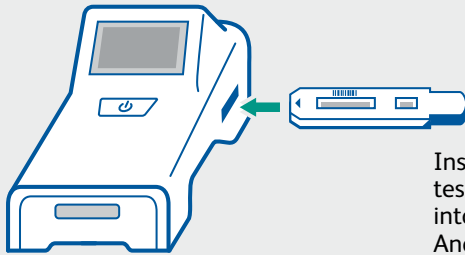
Analyze Now mode



Add 3 drops to the test strip sample well

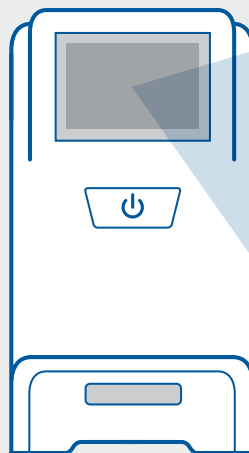


Wait 15 minutes and then press the power button



Insert the test strip into the Analyzer

View results



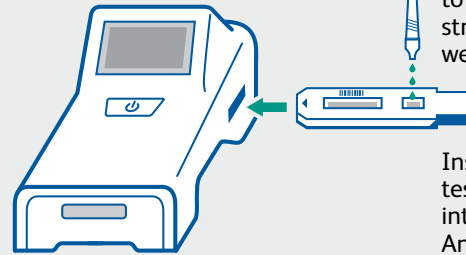
Walk Away mode



Press the power button. When prompted, double click for Walk Away mode.



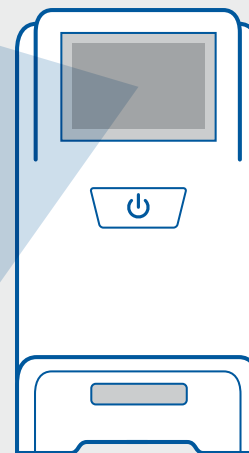
A 3 minute countdown will display



Add 3 drops to the test strip sample well

Insert the test strip into the Analyzer

View results



CoV2: -
(Negative)

or

CoV2: +
(Positive)

or

Invalid

Dos and don'ts of sample collection

- Do collect sample as soon as possible after onset of symptoms.
- Do test sample immediately.
- Use only swabs provided with the kit.
- Refer to: Interim Guidelines for Collecting, Handling and Testing Clinical Specimens from persons for COVID-19 at <https://www.cdc.gov/coronavirus/2019-ncov/lab/guidelines-clinical-specimens.html>

BD Veritor™ System for Rapid Detection of SARS-CoV-2 instructions for use, package insert. Franklin Lakes, NJ: Becton, Dickinson and Company.
This test has been authorized for sale in Canada by Health Canada under Interim Order;
This test is only authorized for the duration of the interim order respecting the importation and sale of medical devices for use in relation to COVID-19, unless the authorization is terminated or revoked sooner;
This test has been authorized only for the detection of proteins from SARS-CoV-2, not for any other viruses or pathogens.

